

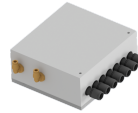
## 802 WD AIREX 14V 1/3D - AIR POWERED EXPLOSION PROOF



ELECTRONICS



PACKAGING



- ✓ Vacuum gauge to detect filter clogging
- ✓ Compact and mobile
- ✓ Easy filter replacement
- ✓ Floating device to stop the suction when container is full
- ✓ Discharge hose for liquids
- ✓ Earth grounding
- ✓ Powerful suction thanks to a multi-nozzle venturi unit



### SUCTION UNIT

Atex zones	ATEX Z20/21 Z1-2	
Air supply	nlt / min	1458
Air supply pressure	bar	6
Ø Air supply hose	mm	12
Max water lift	mmH <sub>2</sub> O	3700
Max water lift	mmH <sub>2</sub> O	3700
Max air flow	m <sup>3</sup> /h	300
Suction inlet	mm	80
Noise level (EN ISO 3744)	dB(A)	68
Marking	II 1/3D Ex h IIIC T80°C Da/Dc	



### FILTER UNIT

Filter Type	Bag	
Surface - Diameter	cm <sup>2</sup> -mm	8.000 - 420
Material - Efficiency	IEC 60335-2-69	ANT Polyester - M - 1µm



### COLLECTION UNIT

Transport capacity	kg/h	80
--------------------	------	----



### VOLUME

Dimensions	cm	62x53x108h
Weight	kg	36



## SUCTION UNIT

The suction is provided by a venturi compressed-air-driven suction unit, protected inside a strong steel chassis, which contains also sound absorbing material to minimize noise during service. The suction is developed by a venturi-type vented suction unit, protected inside a solid steel head, containing sound absorbing material that minimizes noise during service.

The head includes a pressure and a vacuum gauge, in order to detect the clogging of the filter



## FILTER UNIT

A floating device stops the suction whenever the liquid in the container reaches the maximum level and prevents overflowing.

A propylene filter for liquids is installed upstream. This filter guarantees the efficient filtration of the vacuumed oil; an additional plastic foam filter prevents most of the liquid mist from getting to the motor.

The dust filter is made of a double bag (polyester + nylon) and has a self cleaning system working on the pressure difference principle.



## COLLECTION UNIT

The vacuum is assembled onto a sturdy steel chassis, and provided with industrial quality wheels, that make it suitable for mobile service even when used on rough surfaces.



## OPTIONALS

- ✓ STAINLESS STEEL COLLECTION TANK